

# MAY AUCTION

## **Auction date: Saturday 18<sup>th</sup> May**

Welcome to another Southport postal auction – Mark and Ian will be back next month. For this there is a mixed bag of goodies, including a lovely selection of royal busts, some numbered Shelley models, and two particularly nice selections of Goss's own writings and other literature, some Goss fonts and cottages; and somewhere in between, that most rare of matching Historic Models – the Kininmonth Pot! If you need more information on a lot, they will be out for inspection approx a week before the auction, when I will then be able to answer any specific questions. And of course, any member is more than welcome to visit to see the china themselves should they wish, or visit on auction day itself. Hope you see something for your collection, and good luck with your bids.

### **Remember the address change for the auction.**

Postal entries should be with me by the Friday the day before the auction; emails by 12 noon on the day of the auction. All bids should be accompanied by your full and preferred contact details. All emails will be acknowledged as confirmation of bid. After the auction, notification will go out by email and post – telephone confirmation will only be if specifically requested at the time of bidding. And please, when bidding, it is helpful if you can include with the lot number a brief description of what the lot is.

### **Remember the address change for the auction.**

After the auction ends, all unsold lots are open to offers, within reason. If you would like to discuss offers, after the auction ends, please indicate as such with your bids as this must be completed by Saturday evening, as on Sunday I will be wrapping parcels.

Postage rates were increased on the 2<sup>nd</sup> April: 2<sup>nd</sup> class 'signed for' small or medium parcel (£5.09 or £7.29); orders over £100 are sent special delivery (about £12 depending on size and weight). Payment can be either by cheque (made payable to Nigel Griffin) or bank transfer –

1. <i>Goss and Souvenir Heraldic China</i> by Lynda Pine (Shire Books)		2
2. <i>WH Goss China Cottages</i> , by Hella Regnard		2
3. <i>Millers Goss and Crested China</i> , A Collector's Guide, by Lynda Pine		2
4. <i>Pottery References in the Staffordshire Advertiser 1795-1865</i> , Rodney Hampson (The Northern Ceramic Society, 2000) 136p of advertisements from the paper of the area for a whole range of manufacturers, including Goss of course.		5
5. <i>Goss and Other Crested China</i> by Nicholas Pine (Shire book)		2
6. <i>Let's Collect Goss China</i> , A A C Hedges		1
7. <i>Goss for Collectors: Number One, The Literature</i> by John D Magee		3
8. 1992 <i>The Concise Encyclopaedia and Price Guide to Goss China</i> , Nicholas Pine (Milestone Pubs.)		2
9. <i>The Ceramic Art of Great Britain</i> , Llewellynn Jewitt, the classic collector's edition with both volumes combined		8
10. <i>English Souvenir China</i> , Ewer Imperial International Exhibition London 1909		5
11. Arcadian "Round Tower Windsor" 85mm Windsor		5
12. Arc. "The Forth Bridge" + inscription re building South Queensferry		5
13. Arc. "Clifton Suspension Bridge" Bristol / Clifton		10
14. Carlton "Model of the Forth Bridge" South Queensferry		10
15. Carlton, <i>The Battle of Culloden Cairn + inscription</i> Inverness		8
16. Waterfall, <i>The Soldiers Monument (Boer War)</i> 157mm Hull		10
17. Willow, <i>The "Town Hall Wallingford" looked at from the front with the arms, one column to the back has been broken at the time of firing, and to the back left there is a tiny chip to base edge and a h/c in 1 column. Still looks good</i> Wallingford		5
18. Willow, "St Ann's Well" Buxton		15
19. Unmarked "Lincon Cathedral West Front" just 1 steeple point chipped Lincoln		4
20. Willow "Monnow Bridge Monmouth" Monmouth		10
21. Carlton "Tower of Refuge Douglas" Lustre 70mm Douglas		8
22. Unmarked, Banbury Cross and verse Banbury		5
23. Willow, "Windsor Castle" 120mm wide Windsor		8
24. Arc. "Rochester Castle dating from 1126" Rochester		20
25. Arc. "Martello Tower etc" Clacton		10
26. Arc/. "The Old Curiosity Shop etc" 65mm London		10
27. Unmarked "Arwenack Monument" Falmouth		12
28. Arc. <i>Norwich Cathedral, 1 tip is short but I'm sure it is a firing fault and not a chip</i> Norwich		8
29. Arc. Ely Priory See of / Ely Priory		6
30. Corona, <i>Canterbury Cathedral west front</i> Canterbury		8
31. Devonia Art, <i>Plymouth Armada Memorial</i> 190mm Plymouth		8
32. Unmarked "Peterborough Cathedral West Front" Peterborough		8
33. Grafton, "Bargate Southampton" Southampton		8
34. Unmarked "Crosthwaite Church" Keswick		15
35. Arc. <i>Wimborne Minster</i> Wimborne		10
36. Unmarked <i>Deller's Café Paignton</i> Chippenham Ancient		20

36. Arc. Nelsons Column, impressive modelling 160mm	London	25
38. Willow "West Front Bourne Abbey" 4mm chip front edge in gilding and underneath	Bourne	5
39. Willow, coloured model of "Famous Old Blacksmith's Shop & Marriage Rooms Gretna Green"		10
40. Willow, 60mm coloured "Old Maid's Cottage Lee near Ilfracombe"		10
41. Willow 105mm "Ann Hathaway's Cottage" coloured		10
42. Willow coloured "Shakespeare's House" 130mm		10
43. Willow coloured 110mm "Model of Burn's Cottage" + details		10
44. Willow coloured "Bell Hotel, Abel Fletcher's House" 120mm		20
45. Willow coloured as above 80mm, rubbed inscription to back		4
46. Grafton coloured 70mm "The Old Maid's Cottage Lee Nr Ilfracombe"		20
47. Carlton duck on green base	Bridgwater	8
48. Carlton Duck on green base stretching wings	Windsor	8
49. Carlton duck on green base long neck goofy looking	Carlisle	8
50. Carlton Turkey on green base, lusted	Rotherham	8
51. Carlton, pecking hen on green base	Bexhill-on-Sea	8
52. Shelley No.307 Grandfather clock	Skegness	4
53. Shelley No.305 Kang-Hi vase presented King George V	Kendal	4
54. Shelley no.202 Turkish Scent Jar	Dawlish	2
55. Shelley no.83 Roman Vase Little Chester Derby	Matlock Bath	2
56. Shelley no.153 Antique Tea caddy Queen Ann	Portobello	2
57. Shelley no.212 Persian scent bottle	Bristol	2
58. Shelley no.205 Celtic water bottle	Bournemouth	2
59. Shelley no.134 Cinerary Urn Northants	Bournemouth	2
60. Shelley no.86 Phoenician vase in Stoke museum	Nottingham	2
61. Shelley no.211 Roman urn from warriors grave Kent	Coventry	2
62. Shelley no.133, Jug from cemeteries from Herpes	Nottingham	2
63. Shelley no.213 Chinese Vase	Skegness	2
64. Shelley no.89 Maltese fire grate	Newmarket	2
65. Shelley no.107, Reading Silchester Urn	Swansea	2
66. Shelley no.119 Kai-Ping vase	Hertford	2
67. Shelley no.115 Chinese Vase	Paignton	2
68. Shelley no.204 Roman vase in Caerswys	Portsmouth	2
69. Shelley no.143 Scandinavian water bottle	Whitley Bay	2
70. Shelley no.200 Ancient Celtic Jar	Torquay	2
71. Shelley no.203 Arabian wine vessel		
	Arms of the FitzWilliams in Mablethorpe Church	4
72. Shelley no.144 Kang-Hi tea caddy	Poole	2
73. Shelley no.201 Roman tear bottle	Paignton	2
74. Shelley no.130 Cyprian pottery	Bournemouth	2
75. Shelley no.105 Swindon Vase	Littlehampton	2
76. Shelley no.82 Persian vase in Wallace collection	Hertford	2
77. Shelley no.206 Cyprian Vase	St Annes-on-Sea	2
78. Shelley no.137 Mivel for pouring over hands	Weston Super Mare	2

79. Arc. Coloured Irish man and pig on tray (see May 2023 GH, FC Ills)		30
80. Arc. Coloured Irish lady on tray (see a/a)		30
81. Willow, Coloured Scots man on wall and tray (see a/a)		30
82. Corona, Salisbury Kettle 115mm. Flags of Allies round neck / 4 Flags and "European War 1914"		4
83. Duchess, vase 85mm decorated as above		4
84. Wy Not China, Salisbury Kettle 90mm 5 flags "United for Freedom we stand"		4
85. Aynsley mug 70mm Six flags and a dove "To commemorate Peace 1919 / From War (image of artillery) to Peace (image of ploughing)"		8
86. Devonia Art, Plymouth War Memorial	Plymouth	15
87. Foley, Dog Kennel	C/T Jack Blandiver Wells Cathedral	4
88. Gemma Shaving mug B/w transfer 2 men's heads "We three Loggerheads"		4
89. Willow, Club Vase	C/T Bear and Ragged Staff Henley-in-Arden	3
90. Arc. Glastonbury Vase	C/T "Old King Cole"	4
91. Wembley, High lipped ewer	Wembley 1924	3
92. Arc. Long necked vase 60mm	Wembley 1924	3
93. Unmarked Lighthouse 95mm	C/T Waterloo Le Lion – The Lion	3
94. Unmarked (Gemma type) Puzzle Jug Verse / C/T Gainsborough type lovers amongst flowers		3
95. Unmarked 38mm 3H Loving Cup Trusty Servant / Verse / (St) Cross Hospital		3
96. Arc. Vase	colour transfer / The Lincolnshire Legend	8
97. Grafton, Brading Ewer	Franco-British Exhibition London 1908	4
98. Grafton Vase 50mm	as above	4
99. Tuscan, 40mm 3H Loving Cup	Southwold Jack / Southwold / Suffolk	4
100. Waterfall, ewer	Four named flags "United we stand"	4
100. Unmarked vase	Imperial Services Exhibition Earl's Court 1913	5
101. English Souvenir China, Vase 60mm The Golden West Exhibition American Industries, Earl's Court London 1909		5
102. 102. English Souvenir China, 2H vase The Golden West Exhibition American Industries, Earl's Court London 1909		5
103. Swan, Dog seated, long neck wearing top hat	Harrow	8
104. Grafton, Long -necked cat, yellow bow, missing bead eyes Canterbury		4
105. Shelley no.336 Long necked cat winking, red bow	Leamington	6
106. Unmarked, Pointer dog	Fleet	6
107. Willow, Pig seated "You may push etc 4 lines"	Morecambe	5
108. Arc. "Model of Welsh goat" short upright horns + inscription Bettws-y-Coed		6
109. Arc. "Model of Welsh Goat" horns curve to the back + inscription Cardiff		6
110. Arc. "Polar Bear" standing	Sidmouth	10
111. Arc. Otter holding fish in his mouth	Shrewsbury	10

112. Carlton, seated begging dog with Glengarry 3-coloured stripes 100mm	Blackpool	5
113. Grafton, Coloured black mouse on cheese		15
114. Willow, Ram with curly horns	Penarth	8
115. Willow, Pelican with full mouth + verse	Dymchurch	6
116. Arc. Pelican standing	Peterborough	4
117. Unmarked, a rabbit sledging	Blackpool	3
118. Grafton, frog legs apart, bead eyes both present	Peterborough	8
119. Unmarked (Grafton) fox, bushy tail and big ears, missing bead eyes	Barmouth	5
120. Unmarked, dog with a rat between front paws		
	C/T 3 Welsh ladies and spinning wheel	8
121. Shelley no.63 a plump duck	Harrogate	6
122. Alexandra, bear rearing u, front claws outstretched	Ealing	6
123. Porcelle, Rabbit, 1 ear up and 1 ear back down 115mm	Margate	6
125. Willow, elephant trunk reflexed to top of head 65mm, walking	Norwich	4
126. Arc. Lioness prowling, or is it a tiger? A beautiful model		
	Hayling Island (blues fading)	10
127. Arc. Seated deer fawn	Skegness	12
128. Carlton, Boxer dog? seated on haunches 110mm	Bridlington	4
129. Grafton, comical smiling pig seated. Tips of ears kiln dust definitely not chips		
	"W'unt be druv"	8
130. Willow, Standing dog, like an Airedale Terrier perhaps. Again, a lovely detailed model standing on separate legs.	Hereford	10
131. Unmarked (Grafton I think) Dismal Dan I think he is called (I think Sylvac made a similar model), big ears and a gloomy looking fellow	Cardinal Wolsey etc	6
132. Carlton, "Upleatham Old Church The smallest church in England"		
	Redcar	9
133. Unmarked (Leadbeater) coloured "Priory Church Christchurch"		70
134. Willow, coloured "John Knox's House Edinburgh etc"		25
135. Unmarked coloured unnamed model of the Cat & Fiddle Inn, over Buxton. According to Collecting Miniature Coloured Cottages (Sam & Maggie Seabrook) this model is sometimes marked for Kensington China.		35
136. Arc. Peterborough Tripod type shape	Poppies "Gift from Tenby"	3
137. Arc. Ewer 50mm	Poppies "Gift from Tenby"	3
138. Arc. Tall ewer 95mm	Poppies "Gift from Matlock Bath"	3
139. Arc. 70mm hexagonal jardiniere, lustred	Red blossom on bough	3
140. Savoy, 40mm sugar bowl with wavy edge	FMN "Matlock Bath"	3
141. Willow, Cauldron on 3 feet 60mm	Poppies front and back	3
<b>The next six lots are Arcadian Dutch Boy &amp; Girl cartoons, the last three inscribed to the base "By Special Permission of Raphael Tuck &amp; Sons Ltd." They have various quotes, but I only list the cartoon title.</b>		
142. Arc. Side-plate 155mm	"Are you Afraid"	5
143. Arc. Jug 70mm	"He loves me. He loves me not. Etc"	5

144. Arc. 110mm ornately-shaped box and lid	"He loves me etc" as above	5
145. Arc. Cup, black trim 55mm	"Two minds but only a single thought"	5
146. Arc. Saucer	"He loves me. He loves me not. Etc"	5
147. Arc. Barrel tankard 42mm	"Spooning"	5
148. Arc. Shaped spill vase 110mm	Black cat "Nottingham"	3
149. Arc. Ditto	Back Cat with church & moon "Blackpool"	3
150. Arc. 90mm taper vase octagonal	Black Cat "Pensilva" (or Pennsilva: in Cornwall)	6
151. Arc. Aberdeen Bronze pot 70mm	Black Cat on piano keys "Malmesbury"	3
152. Arc. Fancy vase 2H 55mm	Black Cat "Llandilo"	3
153. Czechoslovakia, Coronation Chair	Black cat on red cushion "Weston Super Mare"	3
154. Longships Lighthouse	Shanklin	7
155. Teignmouth Lighthouse	Worthing	7
156. Welsh Milk Can and Lid, largest size	Inverness	5
157. Swan with yellow beak 90mm		15
158. Taper mug everted rim, green trim. Margaret Goss 1922 SWEET ORANGES. The blues are just starting to fade; and there is what looks like a h/c through the rim, but after much looking, I am sure it is a 'fold' in the clay in firing.		12.
159. 38mm 3H Loving Cup	Warwick / Warwickshire / Bear & Ragged Staff RL	4
160. 38mm 3H Loving Cup	A single thistle on all 3 sides	5
161. Taper vase everted neck 80mm	Edward the Peacemaker inscription	5
162. Pochard Duck, male (as described in the 'Price Guide') 90mm ash tray		25
163. Arc. Toby Jug 160mm "No Tongue Can tell etc" inscription, blue coat		20
164. Arc. As above in red coat		20
165. Tuscan, Tumbler 110mm	C/T Sands & Promenade Mablethorpe	3
166. Carlton, Vase 55mm	C/T Calton Towers	3
167. Willow, long-necked 2H vase 95mm	C/T Remembrance From Monument Reserve Wangaratta	3
168. JR&Co. 55mm sugar bowl	C/T Ruins of Caergwrle Castle	3
169. Florentine, 68mm taper cup	C/T Langholm from Watch-Knowe	3
170. Grafton, Egyptian Pottery vase	C/T Kilmacolm Hydropathic	3
171. Savoy, Taper mug 70mm	C/T Lion Bridge and Castle Alnwick	3
172. Corona, Lighthouse 105mm	C/T Parish Church Handborough, Oxon	3
173. Willow, Sugar bowl 55mm	C/T Ely Cathedral from SW	3
174. Arc. Vase 65mm	C/T St Nicholas Church Hornsea	3
175. Clifton, mug 700mm	C/T High Street Mold	3
176. Carlton, long-necked vase 95mm	C/T Blackpool from North Pier	3
177. Clarence, 75mm fancy edged bowl	C/T Saltwood Castle	3
178. Clifton, same mould as above	C/T Ollerton Church	3
179. WLD, cream jug 70mm	C/T City Hall Belfast	3
180. Savoy, Taper milk jug 70mm	C/T The Sea Front Paignton	3
181. Unmarked, Tambourine		

	<i>C/T A Runaway marriage at Gretna Green Toll Bar</i>	3
182.	<i>Carlton, round sundial "What o'clock" 125mm C/T Immingham Church</i>	3
183.	<i>British Manufacture, Grandfather clock 122mm</i>	
	<i>C/T Promenade Llandudno</i>	3
184.	<i>Iceni, Marble Arch</i>	<i>C/T Billingham Church</i> 3
185.	<i>Foley, Water pump No.57</i>	<i>C/T St Nicholas Church New Romney</i> 3
186.	<i>Unmarked, Ewer 50mm</i>	<i>C/T Parish Church Grantham</i> 3
187.	<i>Unmarked, Tall ewer 80mm</i>	<i>C/T The Pantiles Tunbridge Wells</i> 3
188.	<i>Arc. Ewer 80mm</i>	<i>C/T Albury Parish Church</i> 3
189.	<i>Carlton, Yellow ground cream jug 80mm</i>	<i>C/T Marine Gardens Rhyl</i> 3
190.	<i>Carlton, yellow ground box and lid rectangle 80mm wide</i>	
	<i>C/T Blackpool from the North Pier</i>	3
191.	<i>Carlton, ditto hexagon 80mm diam</i>	<i>C/T Promenade and Pavilion Rhyl</i> 3
192.	<i>Florentine, creak jug 65mm</i>	
	<i>C/T Tredegar, Top pf Morgan St &amp; Clock 1851</i>	3
193.	<i>Savoy, milk jug 75mm</i>	<i>C/T Windsor Castle</i> 3
194.	<i>Unmarked, creak jug 75mm</i>	<i>C/T Ann Hathaway's Cottage</i> 3
194.	<i>Unmarked, milk jug 50mm</i>	<i>C/T Flying Machine Southport</i> 3
196.	<i>Arc. Heart shaped box and lid</i>	
	<i>C/T Llangollen Bridge 14<sup>th</sup> Century One of the seven wonders of Wales</i>	3
197.	<i>Arc. Vase 65mm</i>	
	<i>C/T The Oldest Pharmacy in England Knaresborough Yorkshire</i>	3
198.	<i>Arc. Bell tent open</i>	<i>C/T Peterborough Cathedral West Front</i> 3
199.	<i>Unmarked, Box and lid 65mm wide</i>	<i>C/T Knole Hose Seven Oaks</i> 3
200.	<i>Unmarked Parian bust and plinth Burns 160mm, chip to base hole</i>	
	<i>Edinburgh</i>	5
201.	<i>Savoy, Albert King of the Belgians</i>	<i>Southampton</i> 10
202.	<i>Carlton, Pair King George V &amp; Queen Mary, Parian busts on glazed plinths</i>	
	<i>Douglas</i>	20
203.	<i>Arc. Parian bust Scott on glazed plinth 115mm</i>	<i>Oxford</i> 5
204.	<i>Arc. "Fisherman" super named model with gilded braces, pipe and blue eyes</i>	
	<i>Wirksworth</i>	10
205.	<i>Arc. "King Alfred the Great" holding cross aloft</i>	<i>Winchester</i> 10
206.	<i>Arc. Robert the Bruce statue</i>	<i>Dundee</i> 15
207.	<i>R&amp;L Parian bust Scott 155mm</i>	10
208.	<i>R&amp;L Parian bust Burns 155mm, larger flake chip 8mm to ack left edge</i>	4
209.	<i>Willow, parian bust Shakespeare from the Monument 145mm</i>	10
210.	<i>H Bros., Shakespeare parian bust Rysbrack 135mm</i>	8
211.	<i>Unmarked parian bust on square plinth Highland Mary</i>	8
212.	<i>H Bros., parian bust Ann Hathaway 115mm</i>	5
213.	<i>H Bros, parian bust Shakespeare from monument 100mm</i>	5
214.	<i>Savoy, chubby policeman with hands behind back,</i>	<i>Chelmsford</i> 10



215. Wilton China, coloured spiv-type figure in trilby and baggy trousers, smoking a cigarette (the figure is listed on an ashtray but not as a standalone figure) 60

216. Arc. Taper milk jug 70mm, A cockerel and a hen "Be easy wiv the cream" 5

217. Arc. Ball cream jug 40mm crimped top and black trim, coloured cockerel "Be easy wiv the cream" 5

218. Arc. 3H Loving cup 33mm  
Three hens, all different 5

219. Swan, sugar 40mm and same crimped edge as number 217 above, One black cockerel / two cockerels about to fight 5

220. Taper mug 75mm, single black cockerel "Tak a cup of kindness For Auld Lang Syne" 5

221. Arc. Soda syphon  
Tropical Birds "Gift from Buxton" 4

222. Arc. Toby Jug  
Tropical birds "Gift from Grasmere" 4

223. Arc. Long-necked IH ewer 90mm Tropical Birds "Gift from Ollerton" 4

224. Grafton, Long necked vase 72mm coloured bird, but don't know what of, but looks more ornithological rather than decorative 4

225. Arc. Milk jug 75mm Two different coloured birds on branches 4

226. Arc. Milk jug 75mm (Black Cat mark) Tropical birds "Gift from Rye" 4

227. Arc. Puff box & lid Tropical bird "Gift from Westward Ho" 4

228. Arc. 150mm fancy tray "Gift from Guiseley" and what can only be described as a full painting of two colourful birds in a countryside setting. Quite the most beautiful of trays for a dressing table. 8

229. Parian bust Burns on socle plinth 130mm 15

230. Parian bust of Scott in tartan plaid 135mm 15

231. Scott parian bust in jacket and waistcoat 135mm 25

232. 3<sup>rd</sup> period Shakespeare parian bust 110mm 5

233. Peeping Tom, white parian bust 20

234. Parian bust of Gladstone on socle plinth 125mm (the 'Price Guide' refers to there being two versions the same size, one with older features. Having only this example in front of me I can't say which it is. But if a member does happen to have both versions, I should think other members would be interested to see a photo showing the differences) 50



235. Aberdeen Bronze Pot, medium	Haddington (arms illustrated in The 'Price Guide' as 'David by the Grace of God King of Scotland')	8
236. Ditto, small	Fort William	4
237. Amersham Measure	Rathmullen	8
238. BEACHYHEAD LIGHTHOUSE, brown band	EASTBOURNE	8
239. Beachyhead LH, brown band	Floreat Hova	5
240. Ditto	Cuckfield	5
241. BOURNEMOUTH BRONZE MACE HEAD	BOURNEMOUTH	6
242. Carmarthen Coracle	Conway	8
243. Dover Mortar	Burgh of Motherwell	5
244. Ditto	Hartlepool	4
245. Eddystone LH	Dyserth	6
246. Eddystone LH	Bognor	6
247. Glastonbury Bowl	Dunoon	4
248. Goodwin Sands Carafe	Bishop Auckland	4
249. Gravesend Water Cooler	Heysham	7
250. Hereford Kettle, small	Coleraine	6
251. Longships LH	Clacton	7
252. Maltese Carafe	Ulster	8
253. Newcastle on Tyne ewer	Warrenpoint	6
254. North Foreland Lighthouse	Deal	10
255. Nottingham Ewer	Killarney	4
256. Ditto	Paternal Arms of Queen Alexandra	4
257. Pompeian Ewer	Kingstown	4
259. ROCHESTER BELLARMINE	ROCHESTER	4
259. St Ives Church Font	Cirencester Abbey, First coat	10
260. SALISBURY JACK CR1646, LARGE	SALISBURY / SEE	8
261. Shrewsbury Ewer	Crest of Southampton	6
262. Staffordshire 1H Tyg	Kelso	4
263. Swiss Cow Bell, large	Co-Borough of Tynemouth and North Shields	8



264. Windsor Urn    Bray Ireland (a real Celtic beauty of a coat-of-arms!)    5

265. TEIGNMOUTH LIGHTHOUSE	TEIGNMOUTH	14
266. Ditto	Freshwater	7
267. Ditto	Earl of Carlisle	8
268. Tewkesbury Urn	Stonehaven	4
269. Tonbridge Ewer	Kent	4
270. Tresco Brazier	Droitwich	7
271. Welsh Crochon, small	Aberystwyth	5
272. WELSH HAT	NEVIN	5
273. WELSH HAT	LLANDUDNO	5
274. 38mm cylinder vase on 3-feet	Southey	3
275. Ditto	Man of Ross	4
276. 38mm 3H Loving Cup	Chichester / Seal of / See	4
277. Ditto	Cheltenham / College / Training College	7
278. Ditto	London / Christ's Hospital / St Bartholomew's Hospital	10
279. Ditto	Colchester / Port / Priory	4
280. Ditto	Melrose / Scotland / Ias Stuart Last Abbott of Dryburgh Abbey	6
281. Ditto	Dorothy Vernon / Peveril of Peak / Duke of Devonshire	4
282. Ditto	Sir William Wallace / Dunoon / Sir W Scott	5
283. Ditto	London Hospital / London / St Pancras	8
284. Ditto	Darroch of Gourock / Burns / Scotland	7
285. 42mm Bagware vase	Queens [Oxford College]	8
286. 85mm Jar		
	4 Flags of the Allies, Russian Naval flag, straight 4-line inscription	6
287. Diamond mouth vase	As above	6
288. Milk jug 85mm		
	4 Flags of the Allies, correct Russian flag, 3-line banner inscription	6
289. Taper milk jug 95mm	Enamel transfer Old Scarleit + Verse	6
290. 90mm large Melon cup	Merchants Mark of John Halle	6
291. 72mm cup	FMN "A Present from Leyton"	4
292. 70mm Urn	FMN "A Present from Windermere"	4
293. Club vase	C/T Manx Cat	6
294. Shakespeare's House 78mm		8
295. Ann Hathaway's Cottage 60mm		8
296. Ditto		8
297. "SUGAR" in pale blue castor	Beverley Abbey	5
298. Ball match holder	St Johns [College, Oxford]	7
299. Taper milk jug 70mm	Silver Wedding P&P of Wales Mar.10, 1888	8
300. Miniature tea set FMNs square tray. Saucer, milk and sugar		15
301. 1 <sup>st</sup> period glazed parian model of Boot black, half-circle 8mm radius chip to base hole edge that doesn't show of course.		125
302. Willow "Upleatham Church" white glazed	Redcar	10
303. Willow "Ann Hathaway's Cottage" 105mm coloured		8
304. Ditto		8
305. Arc. Statue John Bunyan on plinth	Bedford	7
306. Carlton, Ripon Hornblower + verse 110mm	Ripon	7

307. Carlton, Edith Cavell full length statue on plinth 160mm	Portobello	7
308. Podmore, John Bunyan statue on plinth 165mm	Leamington	7
309. Willow, statue on Newton on plinth	Grantham	7
310. Willow, status on plinth Sir William de la Pole	Hull	7
311. Unmarked, C S Rolls monument holding a biplane	Llandudno	8
312. Arc. Bust King Edward VII parian on glazed plinth with superb gilding	St Leonards	10
313. Podmore, Westminster Cathedral West Front 125mm	London	5
314. Arc. Submarine E4	Warminster	8
315. Florentine, baby in a bath	Reeth	5
316. Willow, Windsor Castle 85mm	Windsor	4
317. Carlton, Glengarry 2-coloured lines and tassel	London	5
318. Arc. 2-faced jester "Ye jester awake / asleep" black colour to three points of hat and around shoulder shawl	Prestatyn	8
319. Carlton, Beer barrel on stand, lustre "Beer-Beer-Glorious-Beer" XXX to end (Carrington's beer I think)	Swansea	8
320. Arc. Bear and Ragged Staff	Gloucester	8
321. Carlton, little monkey holding orange, lustre, coloured face and fruit. Charming!	LWH Cheddar	10
322. Japan Ewer, large	Bibury / Gloucestershire County Council	15
323. WORCESTER JUG, large	WORCESTER / SEE	7
324. Welsh Jack and lid	Newcastle-Emlyn	5
325. Looe Ewer	Keigwin of Mousehole	5
326. Bristol Puzzle Cider Cup	See of Sodor and Man / Douglas / King William College IOM / Quocunque Jeceris Stabit	7
327. Christchurch Bowl	Essex / CT Ongar Fox	7
328. Orkney Craisie	Bolton Abbey	5
329. Chesterfield Brampton Mug	Aylsham	8
330. CAMBRIDGE JUG, large	CAMBRIDGE	5
331. Lincoln Imp, white parian 140mm small flake chip to his right ear, unmarked as is most common		5
332. Lincoln Imp, white parian 120mm unmarked		10
333. Lincoln Imp Brown parian 100mm unmarked		10
334. Lincoln Imp, white parian 80mm Marked example		10
335. Guildford Vase	Witham	4
336. SHAKESPEARE'S JUG 70mm with facsimile signature	SHAKESPEARE	7
337. Alnwick Celtic Urn	Northampton	5
338. 90mm beaker	CT Robin Hood's Last Shot and Verse to rear	10
339. Romsey Bushel	Buxton	4
340. Laxey Gretch-Veg Urn, arms on the outside	Sandgate	4
341. Saffron Waldon Urn and Egyptian lid	Belgium	8
342. Bournemouth Bronze Urn	Combe Martin	8
343. ABERDEEN BRONZE POT, small	TWO THISTLE DECORATIONS	10
344. WELSH PICYN	BANGOR	6
345. Cheddar Cheese, white glazed	Isle of Wight Ancient	6

346. Norwegian Horse Bowl	Dovercourt	7
347. Newcastle on Tyne Jug	Mount St Bernard's Abbey Nr Coalville	6
348. Laxey Gretch-Veg Urn, arms inside bowl	Felixstowe	
349. Portland Vase	London (certainly Local as the original is in the British Museum)	6
350. Wensleydale Jack	Royal Military College Camberley	7
351. Las Palmas Jar	Bolton Abbey	5
352. Las Palmas Jar	Witham	5
353. Newcastle Stone, 2H Cup	Schola Bedfordiensis 1552 / Unnamed	8
arms bird open winged on red shield no banner		
354. GUY'S PORRIDGE POT	CT REAR and RAGGED STAFF R.L.	10
355. Seaford Urn	4 Welsh antiquities: Prince of Wales feathers / Red dragon / breast shield / torque	10
356. 65mm taper mug everted rim		
	CT Southwold Jack (this the version that is B/w on coloured footing)	10
357. Cherbourg milk can and lid	Congleton	8
358. WELSH HAT	SEAL OF CARDIGAN MODERN	8
359. Parian bust on socle plinth, with cartouche of a child 'Grief.' The shawl over her head, and the cartouche to front of plinth, both gilded edging and highlights. Impressed marked to the shoulder.		250
360. Parian spill holder of Dr Kenealy, caricature head and lengthy inscription to the base incised in Goss's own hand for 1875		150
361. Shakespeare's bust, the Rysbrack, impressed mark to back. No plinth		40
362. BOULOGNE WOODEN SHOE	BOULOGNE	6
363. CHILE STIRRUP	CHILE	65
364. Dinant Shoe	Arras	6
365. DUTCH SABOT	ROTTERDAM	15
366. Hornsea Atwick Vase	Royal Artillery	10
367. IRISH MATHER large	MUNSTER (blue just starting to fade a trifle) / ARMS OF IRELAND / WATERFORD / Verse Seek out he good etc	10
368. Louth Ewer, large	Chester	8
369. NORWEGIAN SHOE	TROMSO (a reindeer)	35
370. QUEEN VICTORIA'S SHOE	QUEEN VICTORIA	5
371. QUEEN VICTORIA'S SHOE	SIDMOUTH	5
372. QUEEN ELIZABETH SHOE	QUEEN ELIZABETH	40
373. QUEEN ELIZABETH SHOE	THAXTED	35
374. Queen Elizabeth Shoe	Earl of Leicester, Seat: Holkham Hall, Norfolk (he was the queen's lover so this must be highly appropriate)	25
375. Very large globe vase with 3 knurled handles 195mm		
	Chesterfield / Duke of Devonshire / Duke of Portland	25
376. Ann Hathaway's Cottage nightlight		15
377. "WINDSOR CASTLE" 80MM WIDE	WINDSOR	10
378. Swiss Cow ball, large		
	Row (in Scotland, and apparently now called Rhu)	8

379. Saxony, an owl on three books. The most stunning model, and these Saxony models are so often, as in this case, made of a wonderful quality porcelaneous china. The model is extremely well detailed. 120mm Weymouth 45

380. Saxony as above 100mm

*Cheltenham (the name banner just rubbing slightly)* 35

381. Savoy, Owl on a book and an unlisted model. even more detailed than the Saxony example above. Carlisle 15



382. Carlton "Jenny Jones" coloured hat and shawl standing on a rocky base

Colwyn Bay 8

383. Carlton, Jenny Jones, coloured hat and shawl. The model is almost identical to the above but without the addition of the rocky 'infill' round her ankles. Not an uncommon model, but are there other, different examples? And who was Jenny Jones? The editor would be pleased to hear from you.

Llandudno 8

384. Unmarked Dutch Sabot type shoe.

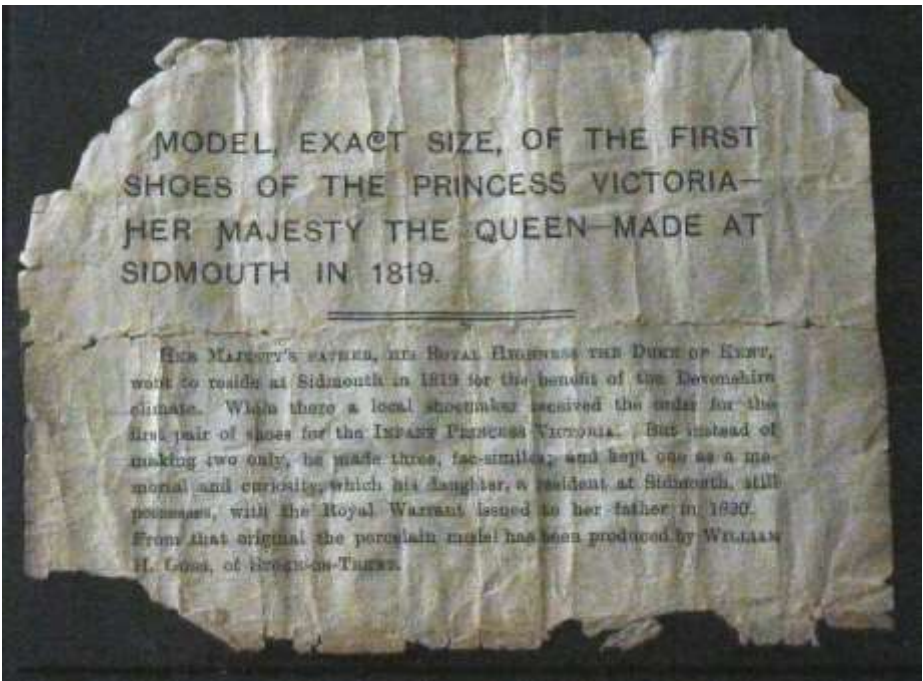
An unrecorded coloured decoration of a porcupine underneath a crown; possibly representing King Louis XII of France and/or the ancient French Order of the Porcupine. But if you have another explanation, please do contact the editor. 10





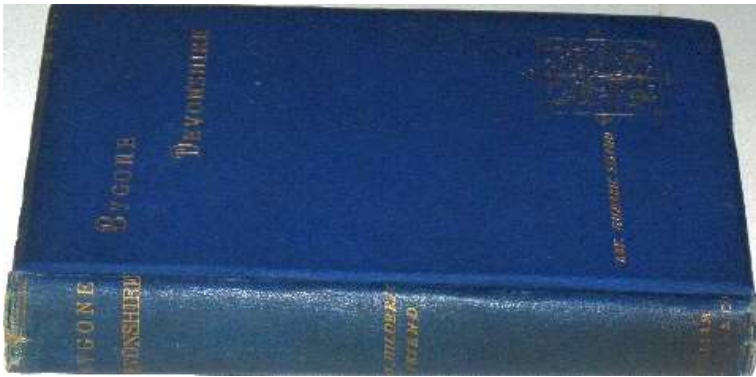
385. Tuscan, a beer tankard 55mm  
*An unrecorded decoration of "The Most Exalted Order of the Star of India." You do really wonder who ordered, and who bought, some of these decorations. This is a scarce Order of Chivalry and anyone granted such a privilege would, most certainly, have come from the upper echelons of society, and you might have thought therefore gone to one of the bigger ceramic names for a commemorative. Yet another in that ever-growing list of questions.* 12

386. KININMONTH POT, very feint 10mm rim h/c OLD DEER 50  
 387. Goss leaflet for Queen Victoria's Shoe, a rather good example that has been laminated for protection 3  
 388. A leaflet, slightly less than postcard size, an alternative and unlisted example, in poor condition but the relevant wording part is intact. 5



389. *Bygone Devonshire* by Hilderic Friend with autograph gummed to front of William Huntley Goss Esq., and inside Title page "With best love from William Henry Goss to dear Huntley 14/4/98. In very good condition. 20

W H Goss Esq  
Stoke Newington  
Autograph of William Andrew F.R.H.S.

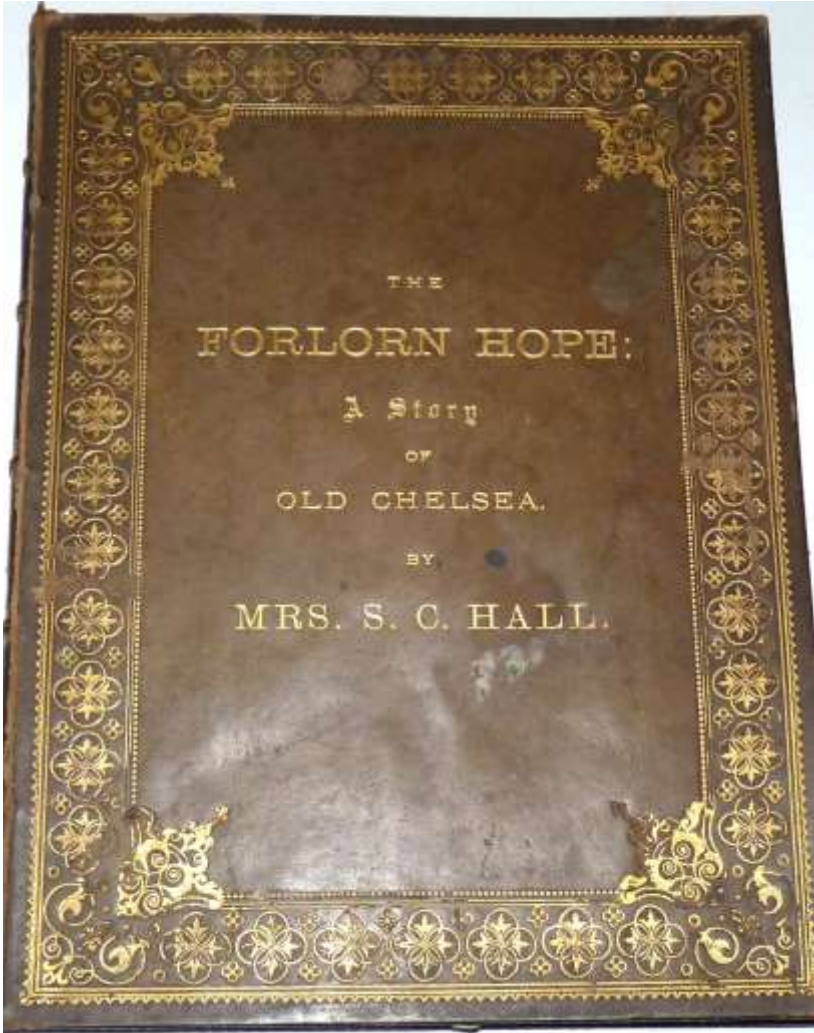


This Sketch  
is Reprinted from  
"The Reliquary,"  
For Presentation to the Members of  
The North Staffordshire Naturalists' Field Club  
and Archaeological Society,  
Of which Llewellyn Jewitt was an Hon. Member,  
And it is gratefully Dedicated to  
The Rev. Chas. W. Daltry, M.A., F.R.S., etc.,  
Who has been for nearly twenty years that Society's Hon. Secretary,—  
By one of its Vice-Presidents,  
The Author.

[When permission was asked to make the above Dedication, it was to the "Society's indefatigable Hon. Secretary and its best friend," but that gentleman replied that if the Author persisted in the wish to make the Dedication at all, he must please leave out the words "indefatigable" and "its best friend." So these words are omitted, but they are true.—W. H. G.]

390. *A Sketch of the Life and Times of Llewellyn Jewitt* by William Henry Goss (1887) This is NOT the finished book itself but a 24-page introduction "sketch" for presentation to members of the North Staffs Naturalists Field Club with a beautiful illuminated title page, and the most gorgeous gilded leather covers, the back being the same as the front but without the centre writing. Rare doesn't begin to describe this as it is believed to be the only known copy seen in the Goss market. (see inside BC photo) 100

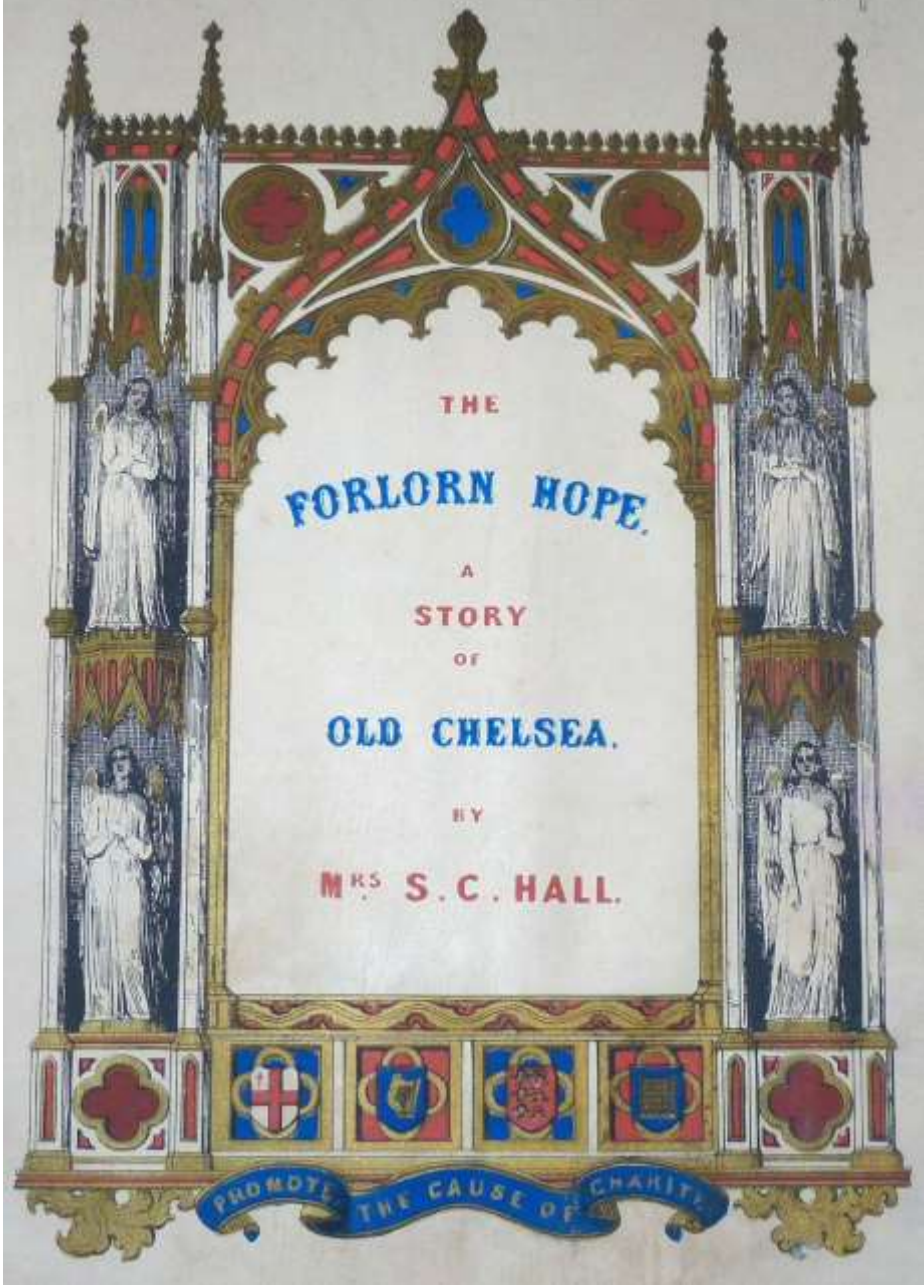
391. *The Forlorn Hope: A story of Old Chelsea* by Mrs S C Hall (wife to one of Goss's best friends) lovely leather and gilded bound book. 2 bookplates / then 2 carte-de-visits glued in of the Halls / a long inscription in ink inside from S C Hall, and on the top of the same page an inscription from William Henry Goss/ and the coloured title page also has Goss's signature at the top, and as usual he writes 'Gofs' not 'Goss'. Tissue papers are torn inside, and the cover has been cleaned professionally. 60



I received this book from my dear friend April 26/87. He had seen it  
 in my dear Catalogue of "Shelton's" and bought it due to promise  
 to me with de triple intention. William Henry Goss  
 15 May 1887  
 W. H. Goss



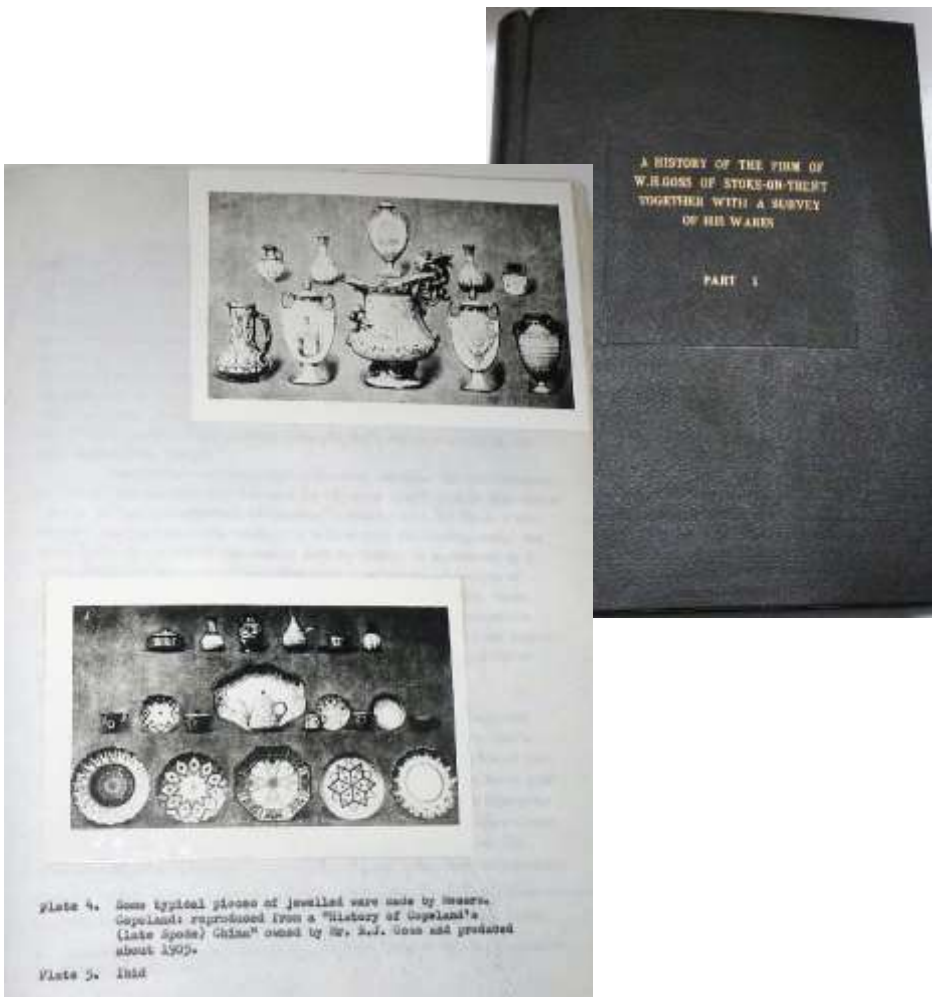
*William Henry Goff.*



THE  
**FORLORN HOPE.**  
A  
STORY  
OF  
**OLD CHELSEA.**  
BY  
**MRS S. C. HALL.**

PROMOTE THE CAUSE OF CHARITY

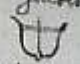
392. TWO postcards, different views, of the Goss agent's shop, with the Goss sign outside, Thomas a Becket Cottage, West Tarring, Worthing 5
393. Goss original leaflet, history of, and advertising, the Ballafletcher Cup 8
394. Goss button, round white, centre hole, with certificate from Nicholas Pine 4
395. *A History of the Firm of W H Goss of Stoke-on-Trent together with a survey of his wares*, by MJW Willis-Fear, in two parts May 1970 (dissertation for his MA at Durham University). Something like 1200 pages of text and original photographs, approx A4 size in two black bound 'leather' covers. My understanding is that the thesis was copied four times (presumably by the old Gestetner type copier) and there were four copies of each photograph made, which were then individually copied into the relevant pages. A massive task indeed. An absolute wealth of information, not least amongst it being the bibliography. A stunning work of reference. 200



1866

March 13

In arranging good garden long cut large  
petals in trills style. the hills being  
formed of light colored narrow ribs, and  
little star like ~~big~~ <sup>big</sup> ~~bed~~ <sup>bed</sup> between forming of same  
on stems of various flowers.

Make mounted garden cross for trees as  
shown below.  and this was brought  
at top, a collection of ~~other~~ ribs built  
in with ornamental leads. Mounted cross  
shown, for its insertion of water if  
necessary.

Aug. 20



The higher points in that in the garden bed  
for the hand a blocker face or looks



For top a little of leaves, center dot white  
mounted with ring of beads in point

Plate 16 from Gramin. Field Honeywell. No. 24  
below line in orange, spots in W.E. of a <sup>single</sup>

Plate 32. A page from W.H.Goss's laboratory notebooks, showing some of his ideas for the decorations to be used on his terracotta wares. The idea for this decoration occurred on August 20th, 1866.

396. *William Henry Goss and Goss Heraldic China*, Norman Emery (Horace Barks Library, Stoke 1970, Occasional Papers No.1) 5

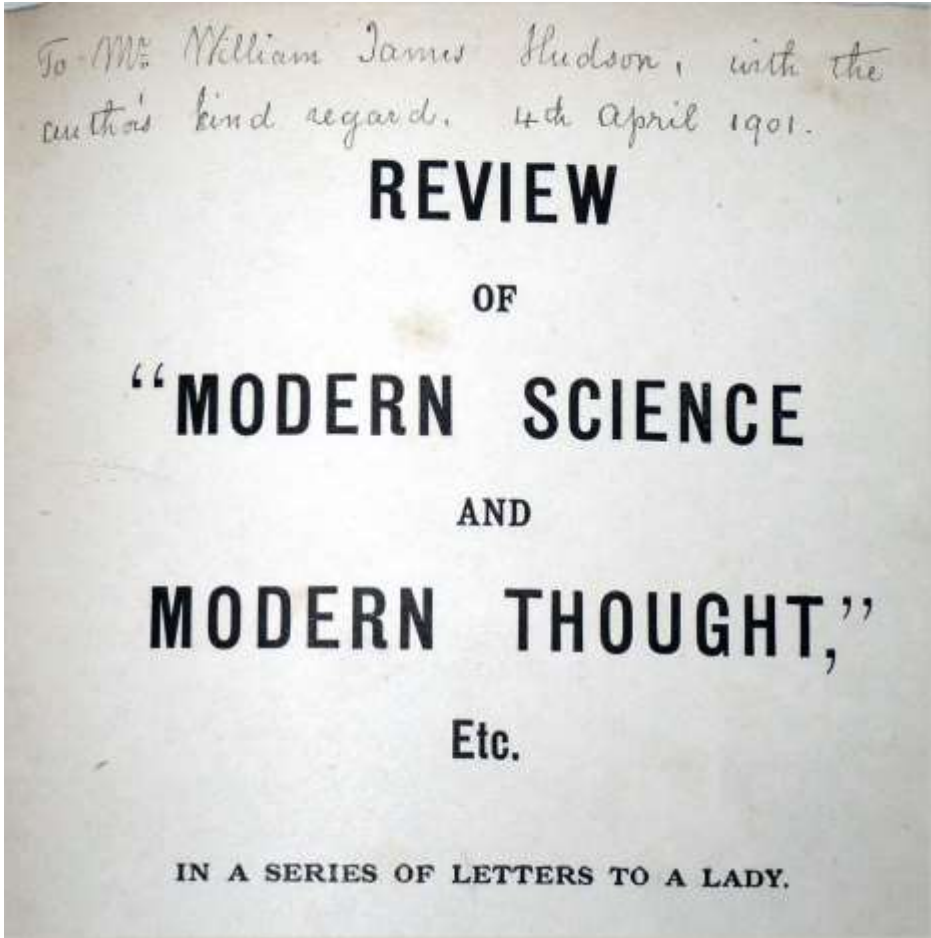
397. A collection of mixed ephemera relating to the (International) League of Goss Collectors. It comprises of (1) letter with official symbol at top 1917 (2) another smaller 1919 (3) another with no symbol for 1921 (4) a receipt for 1917 and (5) another for 1919 (6) enrolment card for the League no.634 (7) another larger for the International League for 1919 (8) a double-sided card list of Goss agents who give special discounts to League members, and lastly (9) a 4-sided folded sheet "*Stories in Porcelain*" with the International League arms to the front about the League. A rare collection of ephemera. 50



398. *Hebrew Captives of The Kings of Assyria* by WH Goss author inscribed presentation copy 1890. In pretty good and strong condition. 40

A photograph of a handwritten inscription on a piece of paper. The text is written in cursive and reads: "To H. Gatterson Smith Esq. With the author's best regards. 21st November 1890." The paper is aged and slightly yellowed.

399. *Review of Modern Science and Modern Thought etc in a series of letters to a lady* [the lady in question was the sister of General Gordon of Khartoum] by W H Goss. An author inscribed presentation copy. In pretty good and strong condition. 40



400. *Fragments from the Life & Writings of William Henry Goss* by Eva Adeline Goss (1907). Written by Goss's daughter, the original book was soft bound on rather cheap paper and this copy was battered on the edges and more so the front cover. Nevertheless, it was still a sound copy. But to preserve it from further damage it has been hard bound, thus retaining the whole of the original safely, and the edge trimmed. It also means the book is safe to read without damaging the spine. The new spine is embossed with the title and author. 436 pages and, so far as I am aware, this is only the second copy to ever come up for sale on the open market. 100

401. OXFORD EWER      EXETER [College. *THE* true matching arms] 20

402. SOUTHWOLD JAR      C/T SOUTHWOLD JACK 12

403. HYTHE MORTAR	HYTHE JURAT'S SEAL	12
404. SOUTHAMPTON PIPKIN, large		
	SOUTHAMPTON / CREST OF SOUTHAMPTON	15
405. Parian bust of Mozart		45
406. Canterbury Font, integral fixed lid, white glazed		30
407. Romsey Cinerary Urn	Purple lustre	8
408. Norwegian Horse Bowl	Flint	5
409. Egyptian Alabaster Vase No.8		
	Enamel transfer Ye Trusty Servant Minstead	8
410. Stockport Plague Stone	City of Bradford	5
411. Carlton, "I'm Forever Blowing Bubbles" part-coloured Pears Soap advertising model	Arms of Melrose	15
412. Impero, "The Fiddler York"	York	5
413. CANTERBURY FONT, white glazed, domed top	CANTERBURY	15
414. ST IVES FONT, white glazed	ST IVES	25
415. AVEBURY FONT NEAR CALNE, white glazed	CALNE	100
416. WARWICK FONT, white glazed with four coloured shields		35
417. CANTERBURY FONT, brown Parian, flat fixed top		80
417. LLANDUDNO ST TUDNO'S FONT	LLANDUDNO	10
418. HEREFORD CATHEDRAL CHURCH FONT brown Parian		125
419. STRATFORD SHAKESPEARE'S FONT, white parian		
	SHAKESPEARE'S CHURCH	10
420. DARTMOOR PONY	TAVISTOCK	90
421. Shakespeare bust, coloured 75mm (Goss England)		7
422. Shakespeare bust 100mm "From the monument" inscription, coloured		20
423. Peeping Tom coloured		40
424. Lady Godiva coloured		40
425. Shakespeare bust 100mm, white Parian "From the monument" inscription		10
426. Shakespeare Bust, The Davenant statue, white Parian		45
427. Beaconsfield bust, small 110mm on socle plinth		35
428. KIRK BRADDAN CROSS brown Parian		35
429. ST COLUMB MAJOR CROSS brown parian		35
430. ST BURYAN CROSS brown Parian		35
431. Cat and Fiddle Inn Buxton		35
432. Dickens House, side windows exposed		20
433. Manx Cottage, glazed		20
434. Prince Llewelyn's House		20
435. Shakespeare's Cottage 75mm		8
436. Shakespeare's Cottage, half-length, closed base and open door 70mm		20
437. Lloyd George's Home with annexe		20
438. First and Last Post Office Cornwall		30
439. Window in Thrums, glazed		30
440. Ann Hathaway's Cottage 58mm		5
441. Cup flared rim	C/T Christchurch	20
442. Carmarthen Coracle	Johannesburg	10

443. Carlton, Wilberforce Monument

Redcar

8

444. Unmarked (Corona) Renault tank. Sorry, but I couldn't help laughing out loud when I first saw this repair job. "Little Willie" springs to mind (Kaiser Wilhelm II's eldest son, amongst Royal circles, was known by this nickname); and the old advert for ESSO petrol, "Put a tiger in your tank." No doubt you'll think of your own. In fact – let's have a competition. An auction voucher for £10 for the funniest caption for this photo. All suggestions to the editor by the 18<sup>th</sup> May – auction date. I can't think of one just now, but there just has to be one that includes 'Viagra' in the caption. Sold as seen, it can be posted in plain brown paper if you prefer!

Cambridge Borough

5



- |   |                          |   |
|---|--------------------------|---|
| 445. Goss Postcard No.1 Fountains Abbey Cup, unused                         | Halifax                  | 3 |
| 446. Ditto  | County Borough of Hanley | 3 |
| 447. Goss postcard no.2 Aberdeen Pot, unused                                | Bournemouth              | 3 |
| 448. Ditto  | County Borough of Hanley | 3 |
| 449. Goss postcard No.3 Welsh Crochon, unused                               | Blackburn                | 3 |
| 450. Ditto  | City of York             | 3 |
| 451. Ditto  | Scarborough              | 3 |
| 452. Ditto  | Chichester               | 3 |
| 453. Ditto  | Bournemouth              | 3 |
| 454. Ditto, small area of paper missing from front of bottom edge 10 x 15mm | Whitchurch Salop         | 1 |
| 455. Postcard No.4 York Ewer, used  | City of Manchester       | 3 |
| 456. DITTO  | YORK                     | 5 |
| 457. Trent card no.67 Cambridge Jug, used, black writing on green card      | Cambridge                | 2 |
| 458. Ditto no.75 Shrewsbury Ewer  | Ilfracombe               | 2 |

- |  |                  |    |
|--|------------------|----|
| 459. Ditto   | Lymington        | 2  |
| 460. Ditto No.618 Ancient Bronze pot (Aberdeen) unused   | Cornwall         | 2  |
| 461. Ditto no.251 Dogger Bank Bottle. Same design but a Tan coloured card  | City of Carlisle | 2  |
| 462. Ditto No.265 Chester Vase, used. On green card  | London           | 2  |
| 463. Ditto No.345 Hereford Kettle, unused, on a Tan card   | Lancaster        | 2  |
| 464. Dito No.627 Southwold Jar, used, on a Tan card  | Dover            | 2  |
| 465. Postcard Goss Agent Brussels, horizontal "Goss Porcelain"   |                  | 4  |
| 466. Two postcards, different views, of the John O'Groats Goss agent shop  |                  | 10 |
| 467. <i>The Life and Death of Llewellynn Jewitt with fragmentary memoirs of some of his famous literary and artistic friends especially of Samuel Carter Hall</i> (London, Henry Gray 1889) Hardback blue leather cover, gilded signature to front, and title and illustration to the spine. It is, and this might come as a surprise to those who have tried Goss's other writings, an interesting read. So many of these personages are clearly also the friends of Goss. The book also makes an excellent reference work as it is fully indexed, so easy to get around. I've had a copy for a couple of decades and it is a book I dip into regularly when researching Goss. Of all Goss's books, this is <i>the</i> one to have on your bookshelf. |                  | 60 |



468. HAMBLEDON CRICKET STONE, grey.

A mish-mash of parts from the Goss factory spoil heap with made-up joining parts which, together, make a very creditable whole. If you are looking for an example of this rarest of models, then this would make a very good interim filler for your collection, whilst waiting for the full original – in another decade, perhaps, if you are lucky!

40



469. BUXTON MARKET CROSS, grey.

The same notes as before refer to this, the rarest of all the crosses. So again, a filler! I can't understand what is going on with the name and mark on the base, but it all looks highly suspect. 40



470. INVERARY CROSS OF THE NOBLES.

Another great rarity, but this example, though from the same source as the previous two lots, looks to be in very good condition, even though the vendor believed it might have been restored. There have been four sets of eyes looking it over and the verdict is 3:1 in favour of it being a 'good un.' The model is therefore sold as a sound example, in the knowledge that, if the buyer is not satisfied then it can be returned for a full refund (see image opposite of the area of particular interest, the join where the two different parts, base and cross, have been, and always were, joined together) 500



471. Beachyhead Lighthouse, brown band	Bridport	5
472. Ditto	Worthing	5
473. Chicken Rock Lighthouse	Royal Leamington Spa	5
474. Eddystone Lighthouse	Dunwich	5
475. HENLEY SCULL	HENLEY 1624	10
476. DITTO	HENLEY 1624	10
477. CAERHUN URN	WALES	18
478. Caerleon Lamp	Wigan	4
479. Devon Pitcher	Villa Cardiff	3
480. Fountain's Abbey Cup	Arms of King Edward VII	3
481. LAXEY GRETCH VEG URN, arms on the outside	LAXEY	7
482. Plymouth Jug	Llanberis	3
483. SOUTHPORT VASE	SOUTHPORT	4
484. Swiss Cow Bell	New Forest	3
485. WALMER VASE	WALMER	3

486. RAYLEIGH COOKING POT  
PARISH OF RAYLEIGH 35





In February 2022, the very first example of the *true match* of Fowey was discovered – and this is that urn! Up until then only local Falmouth had been seen. The larger version of this model is still to be recorded with Fowey making this even more special. This model, in earlier editions of the ‘Price Guide,’ had Falmouth listed as the matching arms. However, in 1989 Mrs Reid-Robertson challenged this notion, even to the extent of questioning this place called Lanlawren (see the *Goss Hawk* July 1989, p8-11.) She not only found the original artefact for the pot, but was able to prove that is originated in Lanteglos-by-Fowey and thus making Fowey *the only* true matching arms.





489. Lady Betty 160mm

25

490. Swan, 40mm 3H Loving Cup

*Queen Victoria / Albert of Saxe Coburg / Details of Queen's reign*

15

491. Willow, "Statue of St Alban" parian on glazed base. Blue of arms starting to fade  
(see this example earlier in the article on St Albans)

St Albans

10